

Wichita County 4-H

November 2023

Newsletter

Wichita County 4-H



Head Heart Hands Health

940-716-8610

What's Inside?

Lots going on this month!

Veterans Day parade

Major Stock Show Entries

Community Service Project for November

Meeting Etiquette

Club Info

Swine validation

Beef Jerky

Ag Id practice

Livestock Skill-a-thon practice

Photography

Safety Concerns

County Show Information

Parades

Christmas Party

School Notes

Contact Information

Katrena Mitchell

Wichita County 4-H Youth Development

katrena.mitchell@ag.tamu.edu

Office Info:

600 Scott St, Suite 200

Wichita Falls, TX 76301

940-716-8610

Office Staff

Melba Flinn

melba.flinn@ag.tamu.edu

Morgan Adams

morgan.adams@ag.tamu.edu

Always call the office before coming by to ensure someone is there!

The background features a stylized American flag with blue stars on the left and red and white stripes on the right. The text is centered in the white space.

VETERANS DAY PARADE

SATURDAY, NOV. 4TH

Trailer line up is at 9am at 5th/Indiana with the parade starting at 11am
thru downtown Wichita Falls.

Feel free to wear 4-H shirts
or Red/white/blue patriotic
shirts!

Bring candy to toss out!

We have a truck/trailer.

We just need riders/walkers and decorations! We have lots of small US Flags. We need
volunteers to make signs and decorate.

Please wear 4-H shirts or Red/white/blue patriotic shirts! We will also need candy to
toss out. All ages of 4-Hers and siblings are welcome.

Trailer line up is at 9am at 5th/Indiana with the parade starting at 11am thru
downtown Wichita Falls.

We are looking for straw bales and a sheep and goat to be on the trailer with us!
We also have a few 4-Hers who will be horseback. If you have a parade safe horse, feel
free to join us!

Spring Major Stock Show Entries

We'll be accepting entries on Nov 6 and 7 here at the office!

That is our DEADLINE!! Don't be late!

Print off the worksheets and fill them out ahead of time or we will have them here at the office too for you to stop by and complete and make your payment.

<https://www.rodeohouston.com/wp-content/uploads/2023/10/2024-Junior-Show-Entry-WORKSHEET.pdf> (Houston)

<https://www.fwssr.com/p/livestock-shows/livestock-entry-applications>
(Fort Worth)

[https://cdn.saffire.com/files.ashx?
t=fg&rid=SanAngeloRodeo&f=Junior_Show_Entry_Form\(21\).pdf](https://cdn.saffire.com/files.ashx?t=fg&rid=SanAngeloRodeo&f=Junior_Show_Entry_Form(21).pdf) (San Angelo)

<https://rodeoaustin.com/wp-content/uploads/2023/10/Junior-Livestock-Show-Entry-Worksheet-WEB.pdf> (Austin)

[https://static1.squarespace.com/static/5b6daef189c17285b78ee50f/t/6525962f2d71274a00210593/1696962096583/Texas%27+Elite+Showc
ase+Entry+Form2024.pdf](https://static1.squarespace.com/static/5b6daef189c17285b78ee50f/t/6525962f2d71274a00210593/1696962096583/Texas%27+Elite+Showcase+Entry+Form2024.pdf) (Texas elite pork producers)

It is highly recommended that you go to each show's website and read thru the rules and know them before signing up to go! It's your responsibility to know what's allowed or not at each of the shows. They're all a little bit different!

Wichita County 4-H



Head Heart Hands Health
940-716-8610



November County-wide Community Service Project

“Spice It Up” Food Drive- spices, flavoring packets, etc. Drop off at practices, club meetings or here to the Office!

*Sponsored by your
Wichita County 4-H Ambassadors*

Wichita County 4-H



Head Heart Hands Health

940-716-8610

Meeting & Practice Etiquette

At your next Club Meeting or Project Meeting...

- 1) All in attendance need to be quiet and listen to whomever is speaking. Lots of good information is given out.**
- 2) Please keep all side conversations to a minimum. Parents and 4-Hers too! If you're talking, you can't hear what's being said. If you must talk, walk out of the room or wait til the meeting is over.**
- 3) Let your Club officers do their jobs. Meet with them ahead of time even if thru email or some other type of communication.**
- 4) Club meetings are to be run by the Club officers and are to the benefit of the 4-Hers. We do understand that parent engagement is needed but please be courteous about it.**
- 5) Parents--adult volunteers are the backbone of 4-H! If you see a way to help your Club Managers or support a project, please do so! We need your help!**

Wichita County Clovers

**1st and 3rd
Wednesdays at 2pm
Park Place Church**

Explorers Club

- Nov. 2nd @9:30am Field trip to Dundee Fish Hatchery
(16824 FM-1180, Electra)
- Nov. 9th Fishing @8:00am
Location TBD
- Nov. 16th
- Nov. 20th 9:00am Adopt a Highway
(weather permitting)
5511 Friberg Church Rd, Wichita Fall

A decorative banner at the top of the page features a string of colorful pennants in shades of green, yellow, orange, and purple. Some pennants have patterns like leaves, pine needles, polka dots, and plaid. The banner is flanked by stylized green leaves.

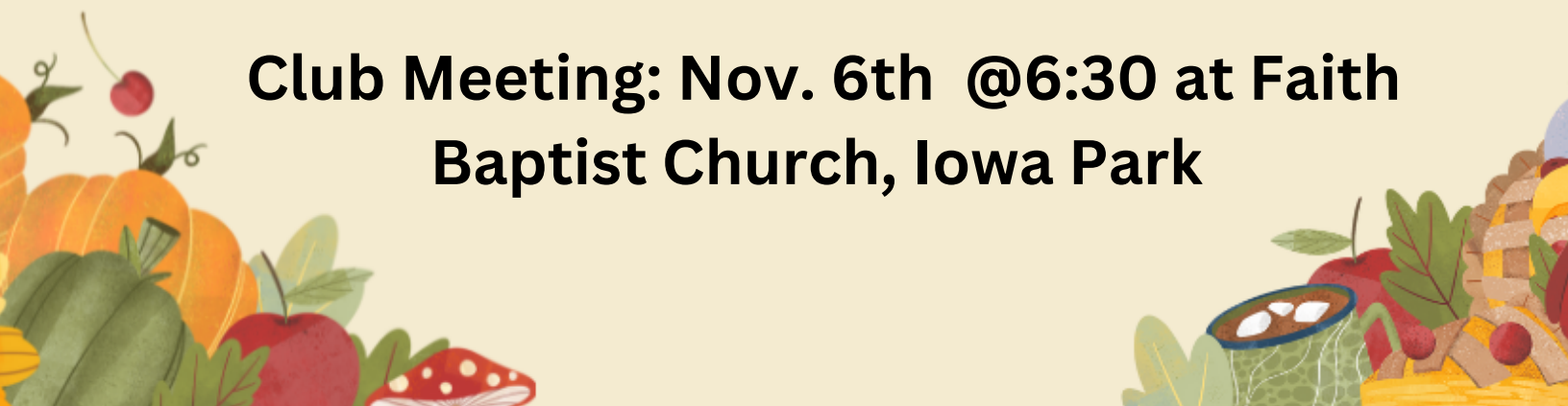
Valley View Club November Community Service Project

Food Drive- Canned food items and nonperishables

Don't forget to bring you're
Spices

For the County "Spice It Up"
Food Drive

**Club Meeting: Nov. 6th @6:30 at Faith
Baptist Church, Iowa Park**

The bottom of the page is decorated with autumn-themed illustrations. On the left, there are pumpkins, a red apple, and a red mushroom. On the right, there are more pumpkins, a bowl of soup, and various autumn leaves and berries.

Burkburnett 4-H Club

November community Service Project

Food Drive- Canned food items
and nonperishables

*Don't Forget to Bring you're Spices
For the County "Spice It Up" Food Drive*

November Club Meeting:
Nov. 20 6pm
Central Baptist Church

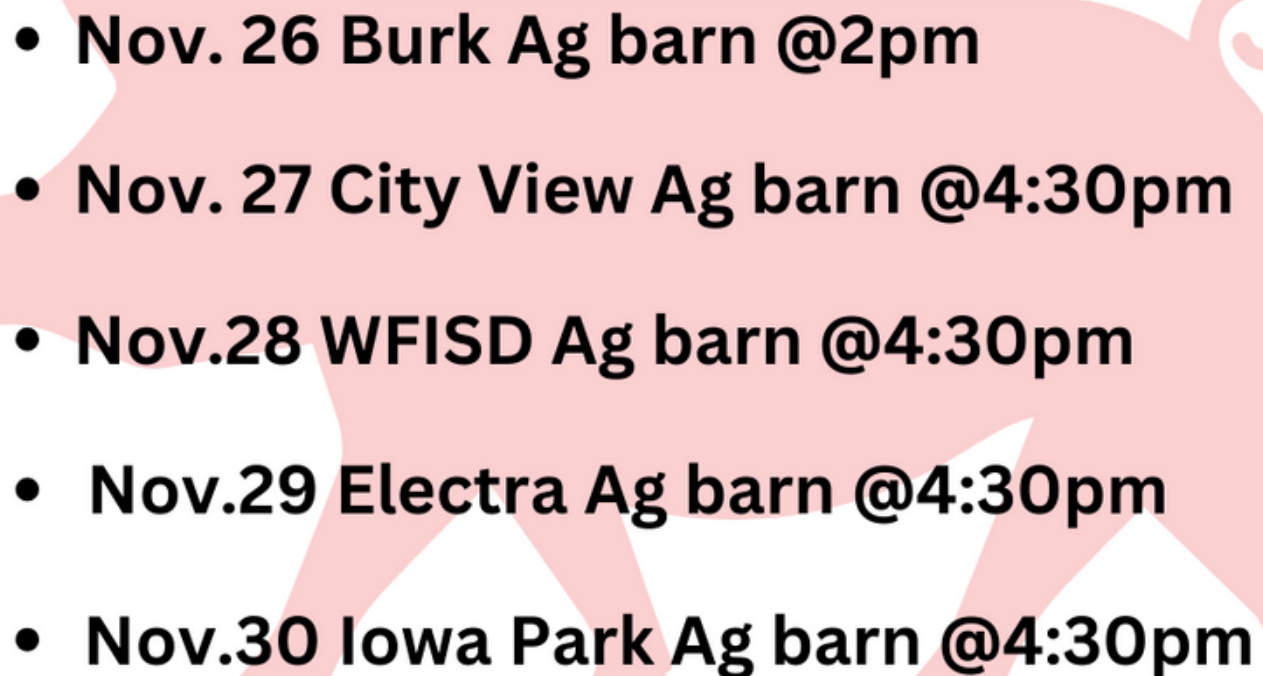
Wichita County 4-H



Head Heart Hands Health

940-716-8610

Swine Validation Dates

- 
- **Nov. 26 Burk Ag barn @2pm**
 - **Nov. 27 City View Ag barn @4:30pm**
 - **Nov.28 WFISD Ag barn @4:30pm**
 - **Nov.29 Electra Ag barn @4:30pm**
 - **Nov.30 Iowa Park Ag barn @4:30pm**

ALL SWINE must be validated to show at county or the
Majors!!

TEXAS 4-H

JERKY

JACKPOT

A FUNDRAISING EFFORT FOR A BETTER FUTURE..

the Texas 4-H Foundation's Jerky Jackpot

CHOOSE FROM FOUR GREAT FLAVORS!

PEPPERED HICKORY



Just the right amount
of pepper to make it
taste like a meat stick!

SWEET SMOKED



If you love the
traditional taste of
jerky, this is the one!

BROWN SUGAR BBQ



Tender with a mildly
sweet and smoky flavor.
A favorite!

SAGRADO HATCH CHILE



Tender Hatch Chile
with a touch of lime.
Just a little sizzle at the end!

Be sure to designate a 4-Her and a
county to receive credit!

Order Here



Script for the Beef Jerky Sale!

Feel free to text this to your family & friends or even better, call them up and ask them to support you!

It is always best practice to call or go in-person to ask someone to support you. If you text, please follow up with a phone call.

Hello! I'm (Your Name) with Wichita County 4-H. We are currently participating in a Texas 4-H Beef Jerky fundraiser and would love your support. \$4 from each bag comes back to our County and helps with our county activities & programs. Plus, for every 10 bags that I sell, I have the opportunity to win some really nice prizes.

All the ordering is done online and the jerky is shipped directly to you within a few days. This will make great Christmas presents for friends, family or coworkers!

Then you can send them this link:

<https://texas4hfoundation.givecloud.co/texas-4-h-jerky-jackpot> or the QR Code!

Make sure that they list your name and Wichita County at the payment section.

Let's go sale some jerky!

Let's make November a great Jerky sale month!

Ag Product ID

This project is learning about ag products grown here in Texas. From fruits & vegetables, crops and meats, 4-Hers will learn nutrition info, growing seasons, national rankings and more. The contest involves identifying the products and answering questions. The District contest is Dec 7 in Graham.



**Practices: 5:45 on Tuesdays at
the Iowa Park RAC**

Livestock Skillathon: This project is great especially for our livestock exhibitors. Learn about the equipment, breed ID, types of feed, cuts of meat and more that go into animal production. District contest is Dec. 7th in Graham

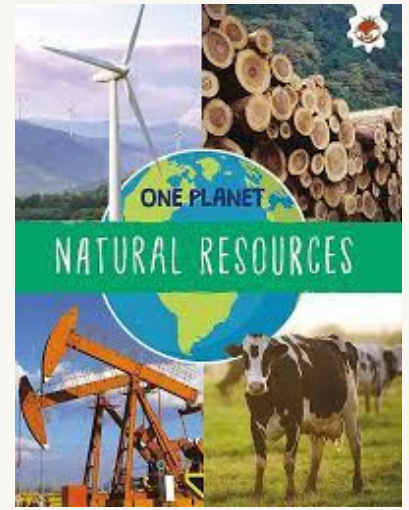
**Practice: 6:30 on
Tuesdays at the Iowa
Park RAC**



Photography Opportunity

Grab your cameras and get ready to capture the world around you! The Texas 4-H Natural Resources Photography Contest will be accepting entries December 1-15, 2023 on 4HOnline. 4-H members of any age can participate! Click for more details:

: <https://ow.ly/M4zm50Q17hY>



Examples of
Natural Resources:

Sun

Minerals

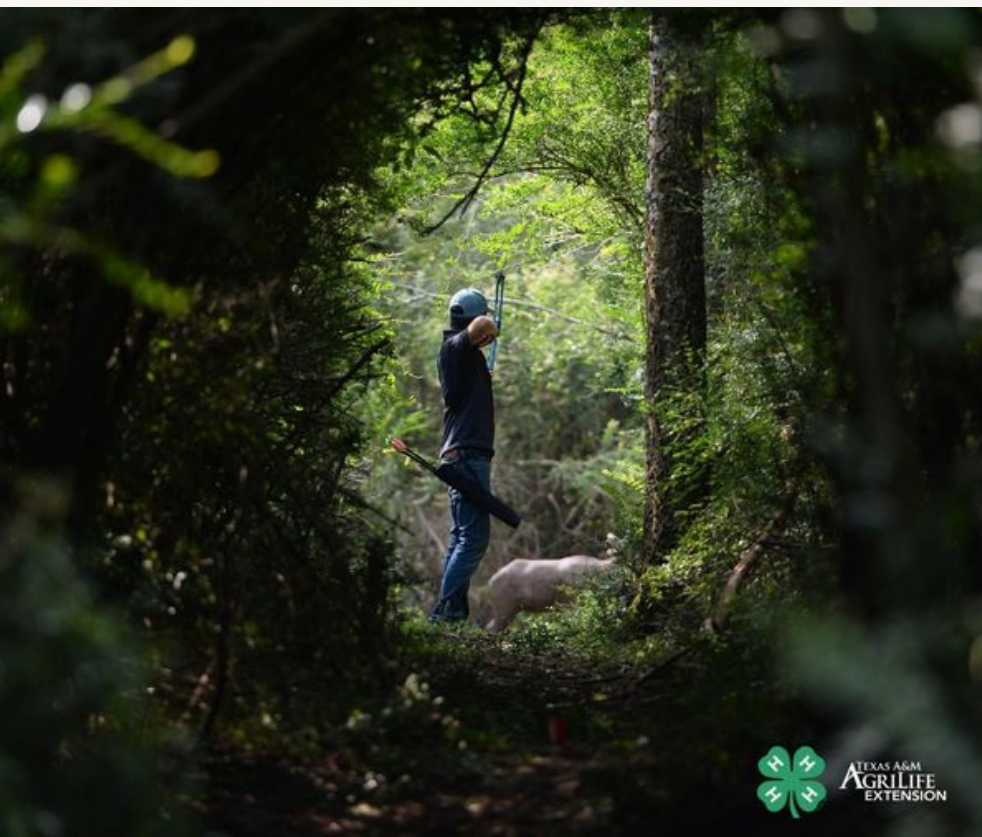
Plants & Soil

Animals

Coal

Water

Natural Gases



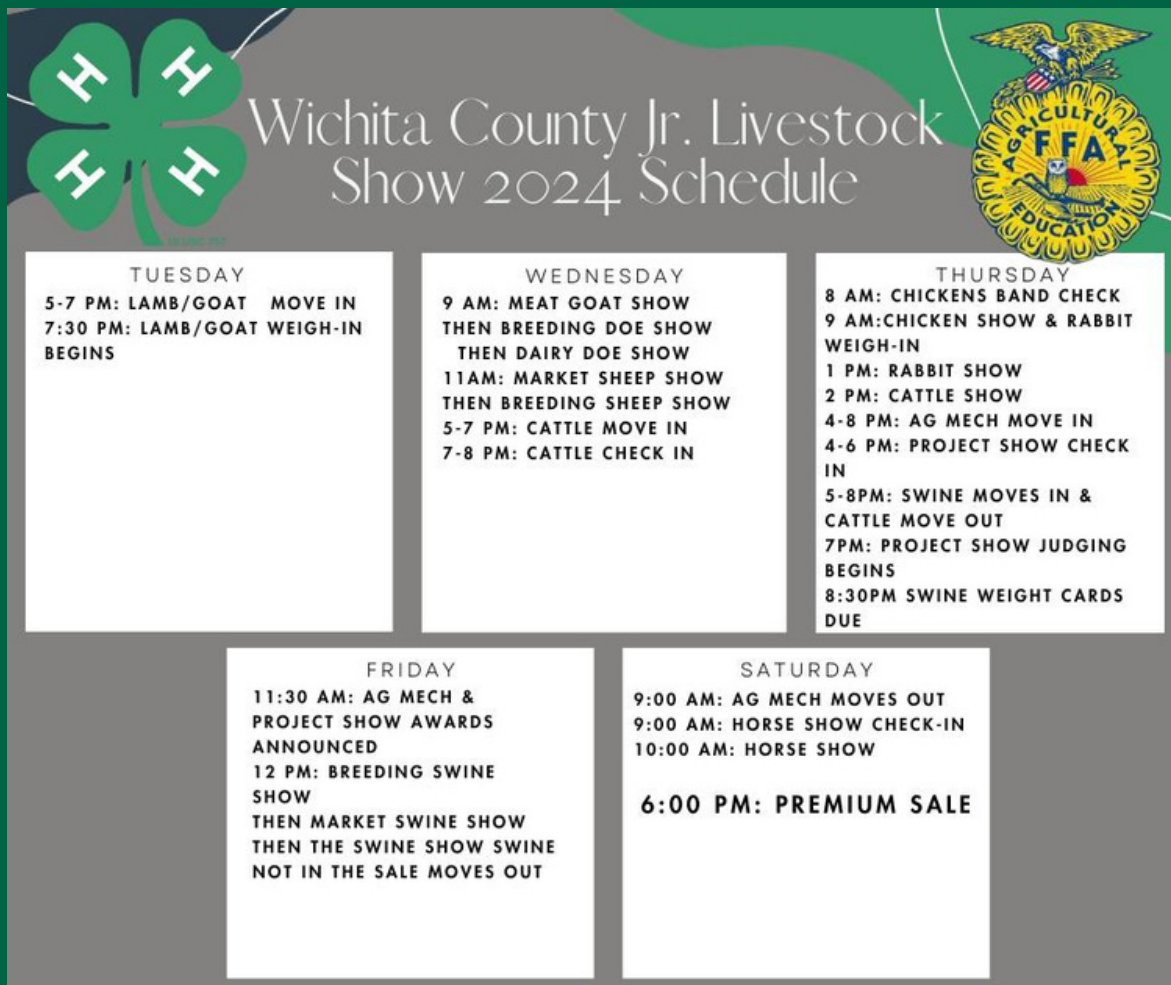


Stock Show Safety

In lieu of events that happened at the State Fair of Texas, I reached out to Melvin Joyner of the Wichita County Sheriffs Department for some safety tips as we head into the Spring Show Season:

- *Always be aware of your surroundings
- *Always know where exits are
- *Look for “safe zones” or areas where you could possibly seek cover
- *Getting to safety is always priority #1. However, in large crowds, panic happens. Don’t get caught in a running crowd in case you fall or get knocked down. You could end up trampled or injured that way.
- *Always use the buddy system. Go nowhere alone!
- *Keep phones charged as a form of communication.
- *Look at apps such as Life 360 for location sharing.
- *Designate a location to meet back at if your group gets separated.

This isn’t meant to instill fear in anyone or discourage anyone from going and enjoying the shows. Just be safe!



The poster features a green background with a large green four-leaf clover on the left and a yellow FFA emblem on the right. The title 'Wichita County Jr. Livestock Show 2024 Schedule' is centered at the top in a white serif font.

TUESDAY
 5-7 PM: LAMB/GOAT MOVE IN
 7:30 PM: LAMB/GOAT WEIGH-IN BEGINS

WEDNESDAY
 9 AM: MEAT GOAT SHOW
 THEN BREEDING DOE SHOW
 THEN DAIRY DOE SHOW
 11AM: MARKET SHEEP SHOW
 THEN BREEDING SHEEP SHOW
 5-7 PM: CATTLE MOVE IN
 7-8 PM: CATTLE CHECK IN

THURSDAY
 8 AM: CHICKENS BAND CHECK
 9 AM: CHICKEN SHOW & RABBIT WEIGH-IN
 1 PM: RABBIT SHOW
 2 PM: CATTLE SHOW
 4-8 PM: AG MECH MOVE IN
 4-6 PM: PROJECT SHOW CHECK IN
 5-8PM: SWINE MOVES IN & CATTLE MOVE OUT
 7PM: PROJECT SHOW JUDGING BEGINS
 8:30PM SWINE WEIGHT CARDS DUE

FRIDAY
 11:30 AM: AG MECH & PROJECT SHOW AWARDS ANNOUNCED
 12 PM: BREEDING SWINE SHOW
 THEN MARKET SWINE SHOW
 THEN THE SWINE SHOW SWINE NOT IN THE SALE MOVES OUT

SATURDAY
 9:00 AM: AG MECH MOVES OUT
 9:00 AM: HORSE SHOW CHECK-IN
 10:00 AM: HORSE SHOW
 6:00 PM: PREMIUM SALE

Wichita Co Jr Livestock Show Entries now Open! Closes Dec 1.

This link will take you to the page where the entry link, rule book and Quality Counts Information is.

<https://wichita.agrilife.org/4-h-youth/4-h-resource-center/>

[Link to Wichita County Jr Livestock Show entry, rules and Quality Counts](https://wichita.agrilife.org/4-h-youth/4-h-resource-center/)



Christmas Parades

City Lights Parade- Wichita Falls

Dec 16 7pm Lineup at 5pm

Theme: Dr Seuss

“If I Ran the Zoo” would be our theme

Burkburnett

Dec 9 6pm Line up at 5

Theme: Christmas Vacation

Iowa Park

Dec 8 7pm Lineup 6:30pm

Theme: Christmas Through the Years

All parades are light up so we will need lights/decoration and a truck/trailer with a generator or ability to power the lights. If one or 2 families would like to step up and help coordinate each parade, that'd be fabulous!! Let me know!



Wichita County 4-H County wide Christmas Party!

Sunday Dec 3

3-5pm

Sand Beach Skating Rink

Come celebrate the holidays with your
fellow 4-Hers!

Admission: Snack Foods to share

More information coming soon!

District 3 4-H



Texas 4-H Shooting Sports Coach Training November 18-19, 2023

Archer County Extension Office
512 West Cottonwood Street
Archer City, TX 76351

Archery  Pistol  Rifle  Shotgun
Western Heritage

Must be a Registered 4-H Adult Leader to Enroll
Deadline to Register is November 10, 2023
Register on 4-H Online
(<http://texas.4honline.com>)
Certification Training Fee: \$130.00

The members of Texas A&M AgriLife will provide equal opportunities in programs and activities, education, and employment to all persons regardless of race, color, sex, religion, national origin, age, disability, genetic information, veteran status, sexual orientation, gender identity, or any other classification protected by federal, state, or local law and will strive to achieve full and equal employment opportunity throughout Texas A&M AgriLife.

Want to become a Certified Texas 4-H
Shooting Sports Coach?

We are always looking for more Coaches!
This is a local training held in Archer City.

If interested, make sure you are signed up to
be a 4-H Volunteer on Texas.4Honline.com
and then you can register for the training.



VOLUNTEER BELL RINGERS NEEDED!

Ring a bell...help change a life

Let's have a 4-H Bell Ringing Day for the
Salvation Army!

Katrena will sign up but we need to pick
a day!

We can do the week of Thanksgiving as
everyone is out of school
or pick another evening or weekend in
December.

Speak up!

If you want to pick your own time, we can
send you that information too!

MAJOR STOCK SHOW ENTRIES DUE

NOVEMBER 6 & 7, 2023
WICHITA CO EXTENSION OFFICE

If you're planning on showing at one of the Spring Majors with your livestock or competing in a contest, entries will be accepted at the Extension Office on Nov 6 & 7.

Please check each show's website for the worksheets and rules before entering!
We will have printed worksheets available to fill out here.

Don't forget payment!

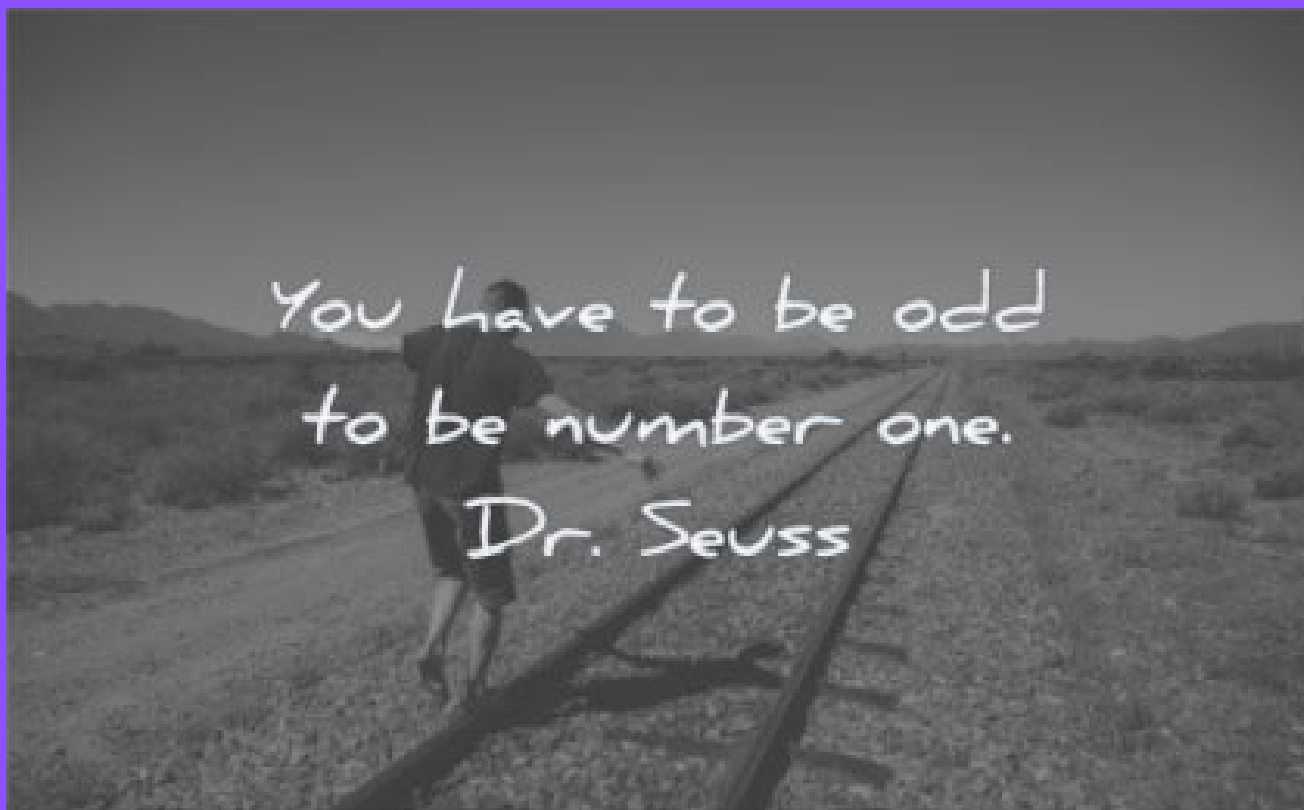
Wichita County 4-H



Head Heart Hands Health

940-716-8610

This includes contests as well as for livestock. Don't miss your opportunity to get entered!



District 4-H Contest Deadlines

Enter on Texas.4Honline.com

Click on the 4-Her's name then choose events on the left side.

District Ag ID and Livestock Skillathon:

Deadline: November 14

Contest: Dec 7 in Graham

District Food Show & Food Challenge

Deadline Nov 18

District Contest: Nov 29 in Jacksboro



School Notes

We are adjunct faculty at each public school district in the county. This means we can provide an excused absence school note when your 4-Her is out for a 4-H sponsored activity. This is shows, contests, field trips, etc.

We need to submit paperwork at least 2 weeks in advance so that the school staff has time to verify grades and state that your 4-Her is eligible as we are like any other activity at the school and follow UIL Rules.

Unless it is somehow missed on our end, we will not submit notes the day of or after the fact.

When you register for an event or activity, please submit those dates to us so we can fill out the forms for the school. If we don't have a signed copy of the form for your 4-Her, we will need to collect that. This all needs to happen when you sign up to show at County or the majors or any District event.